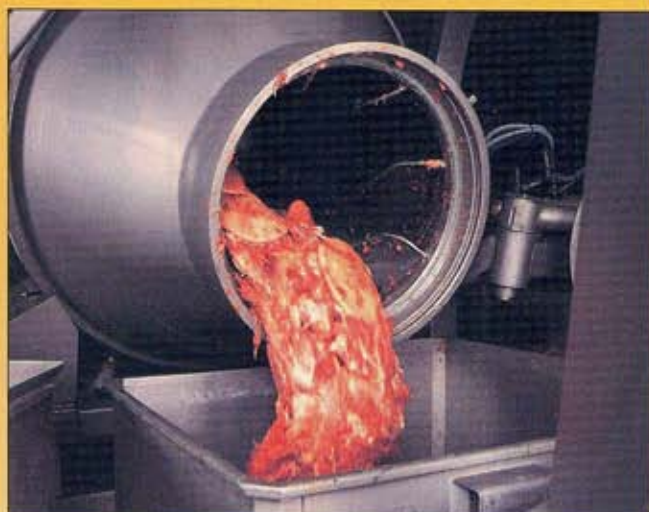


ENGINEERED TO GIVE YOU THE GREATEST VERSATILITY AND PRODUCTIVITY IN TUMBLING OR MASSAGING.



"BRILLIANT"

- Versatility: Infinite processing combinations
- Top Efficiency: The largest productivity in the market
- Tumbling / massaging actions in a single machine
- Exceptional color uniformity
- Very fast brine absorption



- Minimum space required
- Hygienic design: Inner walls mirror polished
- Minimum maintenance and trouble-free systems
- Top quality, simplicity and high durability

NU-MEAT TECHNOLOGY, INC.

601 HADLEY ROAD • P.O. BOX 897 • SOUTH PLAINFIELD, NJ 07080 • 908-754-3400 • Fax: 908-754-3401
www.nu-meat.com • e-mail: sales@nu-meat.com • www.metalquimia.com

